

SM36 - Series Earth Leakages

The SM36 is a three phase heavy duty industrial earth leakage circuit breaker available as a surface mount and CBI Mini rail mount device. This earth leakage circuit breaker is available with earth leakage sensitivity of 100, 250, 500 and 1000 mA.



SM36A
CBI Mini rail &
Surface mount

Features

- Hydraulic-magnetic technology
- 100% rating capability, independent of ambient temperature
- AS/NZS 3910 approved
- Immune to pulsating DC load current
- Precision tripping characteristics
- Ratings 15 A to 80 A
- Earth Leakage sensitivity 100 mA, 250 mA, 500 mA, 1000 mA, **Type A**
- Three pole plus switched neutral earth leakage protection
Switches all active and neutral poles.
- Can be switched on immediately after tripping
- Suitable to use for electrical isolation

Applications

- Mining, heavy industrial and commercial applications requiring different sensitivities for earth leakage protections from electrical shock and fire hazards

Approvals

AS/NZS 3190

Hydraulic-Magnetic Circuit Breakers 100% rated, unaffected by ambient temperature

SM36 - Series Earth Leakages

Technical Data

Product Type	SM36
Approvals	AS/NZS 3190
Number of Poles	3 + N
Standard Ampere Ratings	15,16, 20, 32, 40, 63, 80 A
Sensitivity	100 mA, 250 mA, 500 mA, 1000 mA
Rated Voltage	415 Vac
Rated Interrupting	6 kA
Time Delay Curves	2
RCP Type	A

Product Type	SM36
Ambient Temperature Range	-40 °C to +85 °C
Mounting Options	CBI Mini rail and Surface mount
Time Delay Curves	2
Endurance	1500 electrical operations (AS/NZS 3190)
Dielectric Strength	1480 V (single pole) / 1830 V (multi pole), 50 Hz for one minute after testing
Weight	960 g (unpacked)
Altitude	Certification tests done at altitude ~ 2000 metres. Will operate at higher altitudes.
Shock	16 G (IEC 60068-2-27)
Vibration	2 G (IEC 60068-2-6) (sinusoidal wave)
Flammability	I3 - Ignition does not persist at 850 °C after glow wire is withdrawn with an oxygen index of ≥ 28
Toxicity	F1 - Smoke index of ≤ 20 which determines the fume class
Pollution Degree	PD2 - Normally only non-conductive pollution occurs. Temporary conductivity caused by condensation is to be expected.

Earth Leakage	Wire Size (IEC)	Torque (IEC)	Comments
3+N	0.75 mm ² - 35 mm ²	2.5 Nm	Slotted

SM36 - Series Earth Leakages

Long Code

Example Code: S-M-36-A--2-80A-500mA-415V----

Group	1	2	3	4	5	6	7	8	9	10
Requirement	S Frame	Type M	3 pole + N	Overload	No Auxiliary	Medium delay curve 2	Current Rating 80 A	Sensitivity 500 mA	Voltage 415 Vac	No special termination
Long Code	S	M	36	A	-	2	80A	500mA	415V	-

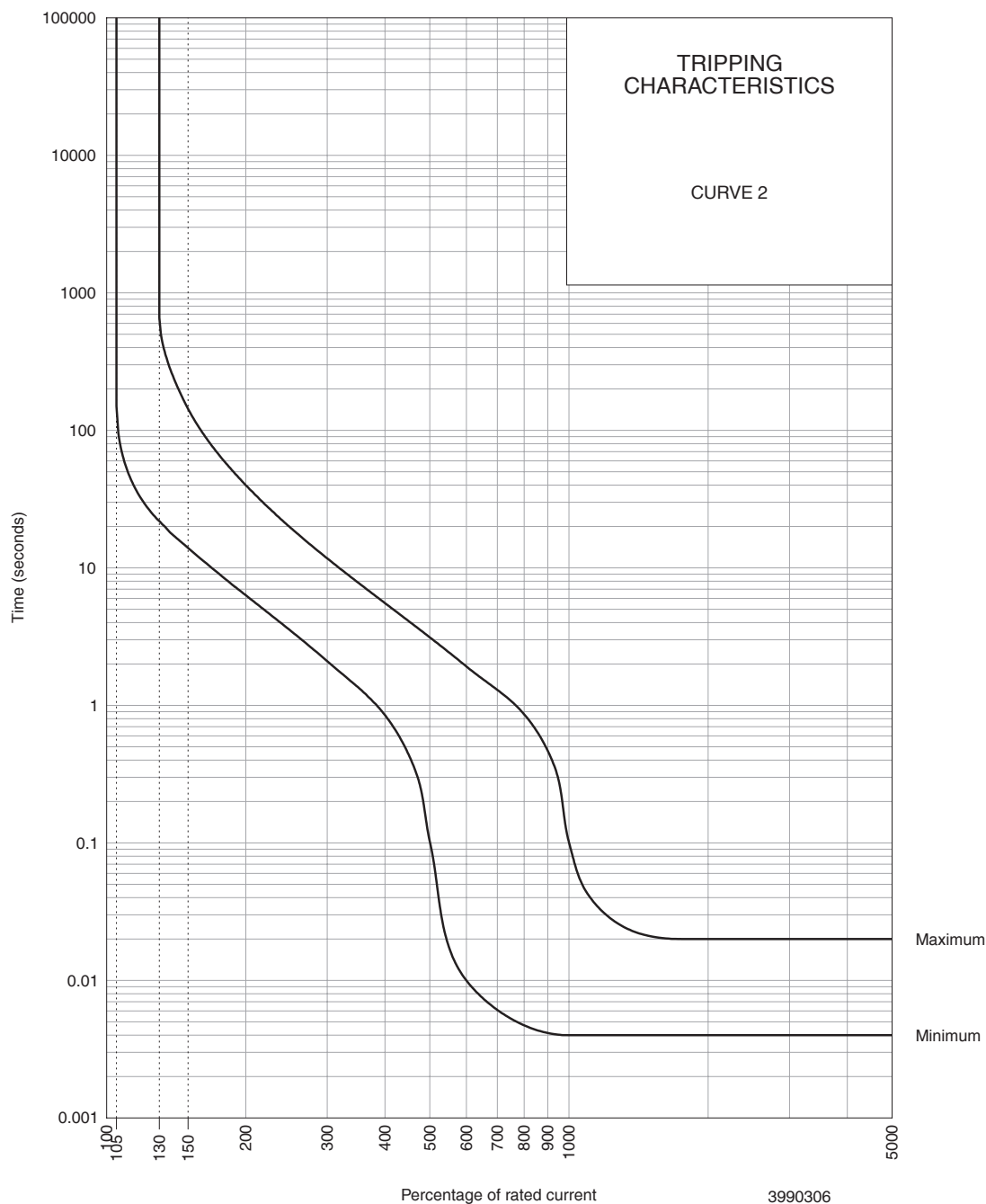
Ordering Information

Group 1: Frame Type	Code	Description	Comments
	S	117 mm wide earth leakage	
Group 2: Product Type	Code	Description	Comments
	M	415 Vac, 6 kA	
Group 3: No of Poles	Code	Description	Comments
	36	Three pole plus switched neutral (3+N)	SM36
Group 4: E-L Type	Code	Description	Comments
	A	Overload	White and green handle
Group 5: Auxiliary / Additional Pole	Code	Description	Comments
	-	Not applicable	
Group 6: Time Delays	Code	Description	Comments
	2	Medium time delay	
Group 7: Current Ratings	Code / Description		Comments
	15, 16, 20, 32, 40, 63, 80 A		SM36 Ratings available vary depending on certification * Other ratings are available as special orders. Check availability.
Group 8: Sensitivity	Code	Description	Comments
	M	100 mA	Standard
	N	200 mA	Standard
	Q	500 mA	Standard
	R	1000 mA	Standard
Group 9: Voltage	Code	Description	Comments
	415V	415 Vac	
Group 10: Special Termination	Code	Description	Comments
	-	No special termination	

For options not listed, please contact CBI

SM36 - Series Earth Leakages

Time Delay Curve

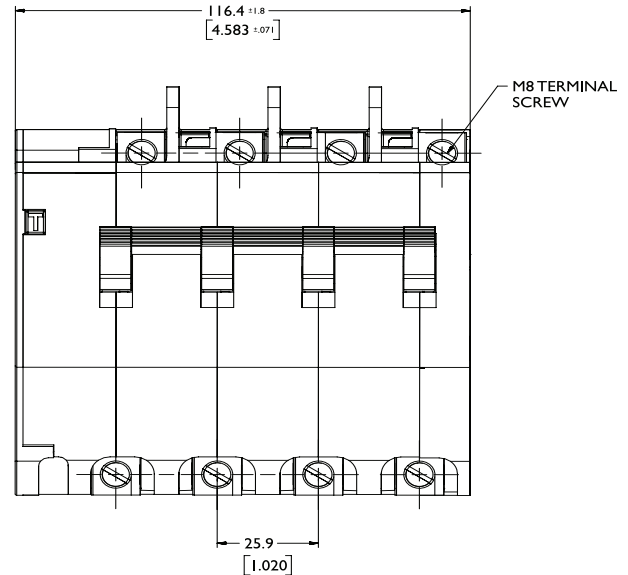
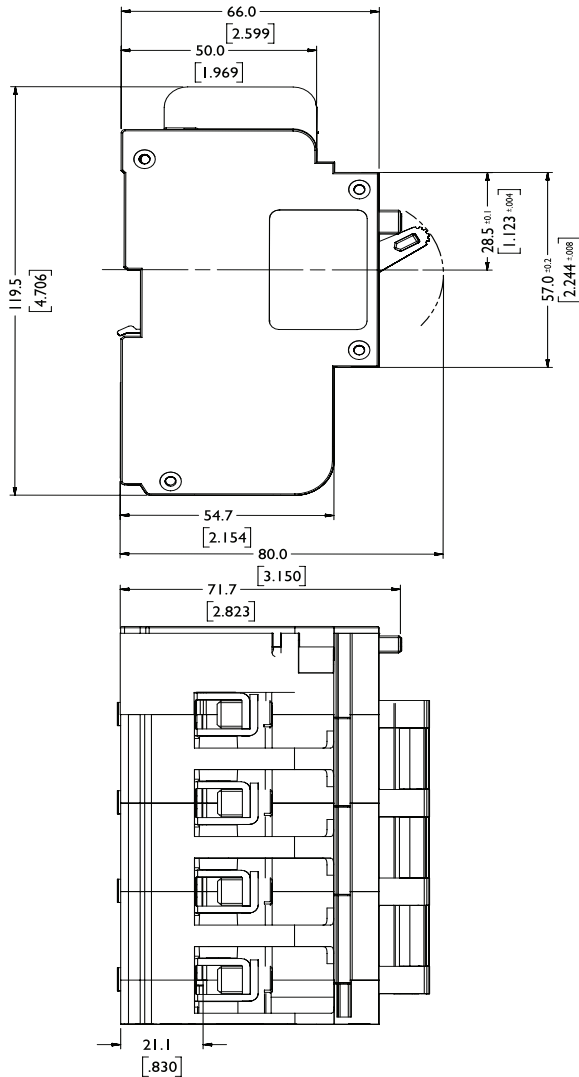


PERCENTAGE OF RATED CURRENT	105%	130%	145%	150%	200%	300%	400%	500%	600%	700%	800%	900%	1000%	2000%
MINIMUM TRIP TIME IN SECONDS	NO TRIP	22	15.4	14	6.3	2.1	0.85	0.1	0.001	0.006	0.005	0.041	0.004	0.004
MAXIMUM TRIP TIME IN SECONDS	NO TRIP	660	180	144	40	12	5.5	3	1.92	1.3	0.86	0.47	0.1	0.02

* The published time delay curves are generated at 30°C ambient temperature with the Circuit Breaker mounted in the up-right position. The “must hold”, “must trip” and “instantaneous trip” current values are not affected by temperature, although delay time for the other operating current values may have to be adjusted using the temperature compensation curve which is available on request.

SM36 - Series Earth Leakages

Outline Dimensions: Surface Mount



TOLERANCE ± 0.4 UNLESS OTHERWISE SPECIFIED
(DIMENSION IN BRACKETS ARE IN INCH)

DRAWING VALID AT DATE OF ISSUE
SPECIFICATIONS SUBJECT TO CHANGE

Please review our Customer Terms and Conditions on www.cbi-lowvoltage.co.za

All rights reserved. Unless otherwise indicated, all materials on these pages are copyrighted by CBI (Pty) Ltd. No part of these pages, either text or image may be used for any purpose other than personal use. Therefore, reproduction, modification, storage in a retrieval system or retransmission, in any form or by any means, electronic, mechanical or otherwise, for reasons other than personal use, is strictly prohibited without prior written permission. CBI (Pty) Ltd reserves the right to alter any details of this document without notice and while every effort is made to ensure the accuracy of the content, no warranty is given as to the accuracy of this document and no responsibility will be accepted for error or misinterpretation and any resulting loss.

AUSTRALIA

CBI-electric: Australia
 27 Wedgewood Rd, Hallam
 Victoria 3803 Australia
 Tel: +61 3 8752 9300
 Fax: +61 3 9796 5407
 Email: sales@cbi-electric.com.au
 Website: www.cbi-electric.com.au

INDIA

CBI-electric: Asia
 A1, Pushpagiri Residency, 1st Cross
 2nd Main, Jyothi Nagar, B.G Road
 Bengaluru 560083, India
 Tel: +91-9880553153
 Email: salesasia@cbi-electric.com
 Website: www.cbibreakers.com
 Website: www.cbi-lowvoltage.com

SOUTH AFRICA

CBI-electric: low voltage
 Tripswitch Drive Elandsfontein
 Gauteng South Africa
 Tel: +27 11 928 2000
 Fax: +27 11 392 2354
 Email: cbi@cbi-electric.com
internationalsales@cbi-electric.com
 Website: www.cbi-lowvoltage.com

USA

CBI-electric: North America
 35 E. Uwchlan Ave Suite 328
 Exton PA 19341 USA
 Tel: +1 610 524 9949
 Fax: +1 610 524 9945
 E-mail: info@cbibreakers.com
 Website: www.cbibreakers.com